

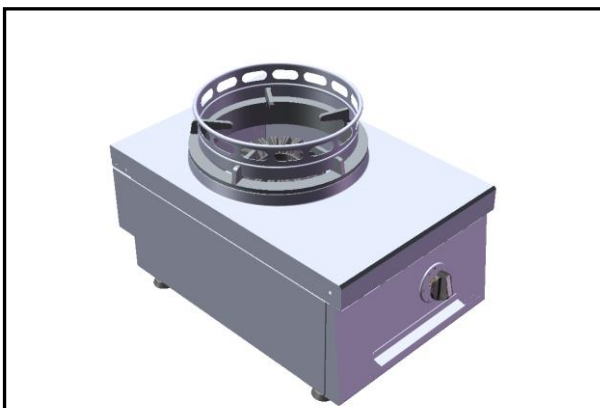


Total Food-Service Solutions

## Modular Cooking - Amicus 600

### NGWT 3-55 SN E

## Gas Wok Ring Table



\*Due to routine technical improvement, the photograph shown may not represent the latest design of the products.

#### AVAILABLE MODEL

1. NGWT 3-55/SN E

#### DESCRIPTION

Gas Wok Ring Table consists of one gas burner with 11.5 kW (G30) or 13 kW (G20) power rate.

Unit to be installed as a table top, on open cabinet or similar elements, cantilever, or cooking suite block configuration.

ITEM# : \_\_\_\_\_

MODEL# : \_\_\_\_\_

NAME : \_\_\_\_\_

SN : \_\_\_\_\_

#### MAIN FEATURE

- 11.5 kW (G30) or 13 kW (G20) cast iron burner.
- Gas system is equipped with flame failure device.
- Circular cast iron pot holder provided.
- Integrated up stand of pot holder to avoid water in the cavity.
- Removable front panel.
- Dirt collecting drawer provided.

#### CONSTRUCTION

- All exterior panels in 304 type of Stainless Steel
- Orbital top surface anti-scratch finishing.
- Top with 1.2 mm surface.
- Side with 1.2mm pressed surface.
- Front with 0.8 mm pressed surface.
- Adjustable  $\pm 30$  mm leg.

#### INCLUDED ACCESSORIES

- G20 Conversion Kit

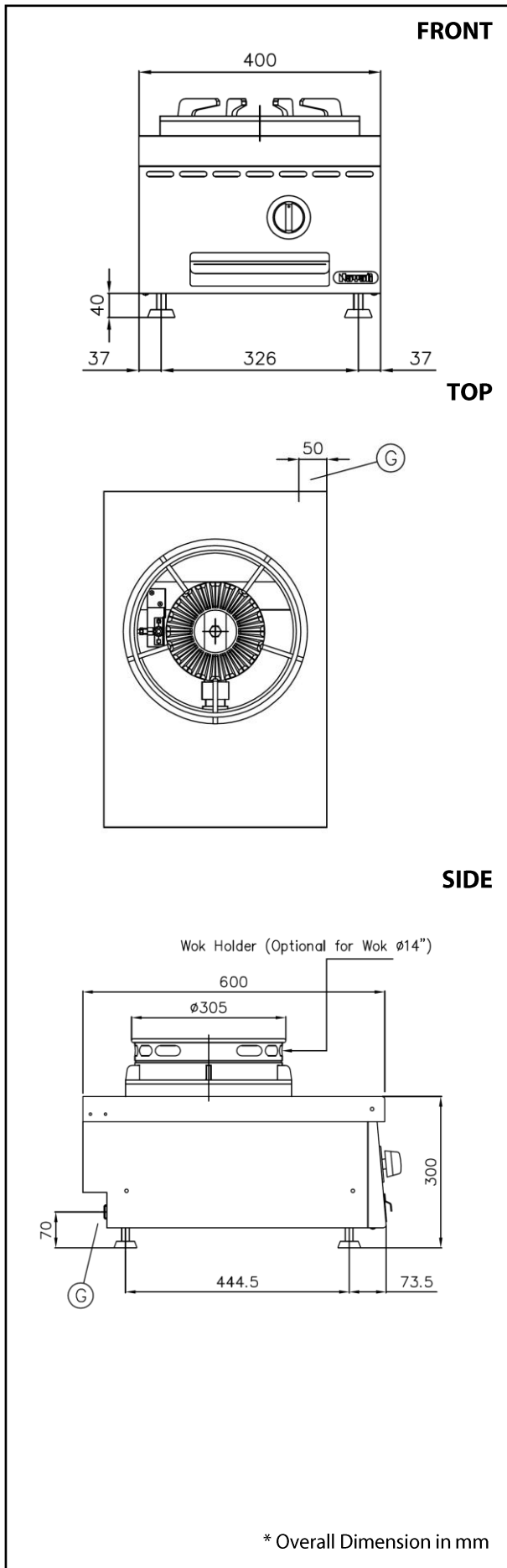
#### OPTIONAL ACCESSORIES

- Wok holder for 300 mm diameter wok.



The company reserves the right to make modifications to the products without prior notice. All information correct at time of printing. 2017.11.09

Modular Cooking - Amicus 600  
Gas Wok Ring Table  
NGWT 3-55/SN E



**ELECTRIC**

Gas Power	:	11.5 kW (6,020 kCal/h)
	:	13 kW (6,450 kCal/h)
Gas Type Option	:	G30/G31, G20
Gas Inlet	:	R ¾"
Natural Gas Pressure	:	G20 : 20 mbar
LPG Gas Pressure	:	G30 : 28-30 mbar G31 : 37 mbar

**KEY INFORMATION**

Cooking surface width	:	Ø 330 mm
Direct heat emission	:	3.25 kW
Latent heat emission	:	1.3 kW
Steam emission	:	1.9 kg / h
Net weight	:	22.5kg
Shipping height	:	395 mm
Shipping width	:	450 mm
Shipping depth	:	700 mm
Shipping volume	:	0.087 m <sup>3</sup>